

**" SLIM CLASSIC LIGHT " SERIES FOR
MAINTAINED / NON-MAINTAINED (OPTIONAL) LUMINAIRES**



TECHNICAL CHARACTERISTICS	GR-1009/L/90
OPERATION VOLTAGE	220-240V AC/50-60Hz
MAXIMUM POWER CONSUMPTION	4 VA
BATTERIES (Ni-Cd)	3.6V/350mAh
BATTERY PROTECTION	From overcharge and full discharge
INDICATIONS - CONTROLS	Battery charging LED, TEST button
CHARGING TIME	24h
MINIMUM AUTONOMOUS DURATION	90 min
ILLUMINATION SOURCE	White LED's
ILLUMINATION (mains/emergency)	25lm/45lm
DEGREES OF COVER PROTECTION	IP 40
PRODUCED IN ACCORDANCE WITH	EN 60598-1, EN 60598-2-22
OPERATION TEMPERATURE RANGE	0 to 40 °C
RELATIVE HUMIDITY	Up to 95%
CONSTRUCTION MATERIALS	Bayblend FR3010, transparent polycarbonate
EXTERNAL DIMENSIONS	262 x 100 x 51 mm
TYPICAL WEIGHT	450gr.
GUARANTEE	3 years (1 year for the battery)

GENERAL

These luminaires are used in places where emergency luminaires are needed.

Each luminaire must be permanently connected to mains power supply.

In normal operation the led strip lights and the battery is charging.

In case of a mains power supply failure the luminaire will light the led strip automatically in emergency mode. When the mains power supply is restored the device turns to normal operation.

NON-MAINTAINED OPERATION

By default the luminaire operates as maintained. The luminaire has a possibility to operate as non-maintained. To change the maintained to non-maintained operation follow the relative instructions in page 2.

INSTALLATION

To install the luminaire follow the installation instructions in page 2.

ATTENTION!!!

1. Operations for installation, maintenance or testing must be done by authorized personnel only.

2. The device must be connected to the mains power supply thru a fuse dependent by the total amount of the line's power load.

3. It is suggested to check every month the indication LED for battery charging, and by

pushing the TEST button to check the emergency circuit. The led strip should: a) light with bigger intensity as long as the TEST button is pressed (maintained operation),

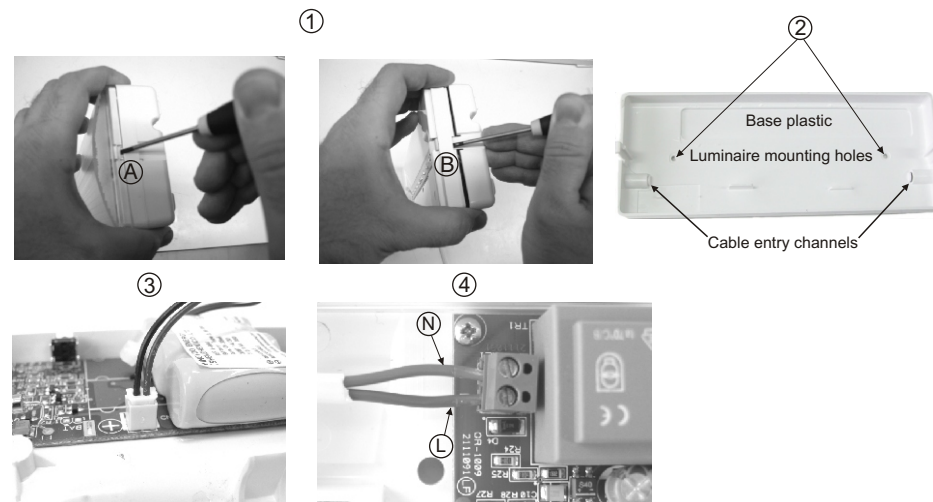
b) light as long as the TEST button is pressed (non-maintained operation). If the luminaire doesn't work as described above contact the installer.

4. It is suggested to check every 6 months the minimum autonomous duration by disconnecting the mains power supply. Count the time that the led strip lights and in case of less time than the minimum autonomous duration the battery must be replaced. If the measured time is considerably less than the minimum autonomous duration contact the installer. In case of battery or led strip replacement, these must be replaced by parts of the same type.

5. In case of inactive use for a period greater than 2 months, disconnect the battery by pulling out the battery's jumper.

6. **It is not allowed to discard batteries in to common trash bins, they must be discarded only in battery recycling points. Do not incinerate.**

INSTALLATION INSTRUCTIONS



- ① To install the luminaire you must dismantle it to 3 parts. Place a flat blade screwdriver in the area **A** to release the diffuser's plastic hook. Place a flat blade screwdriver in the area **B** to release the reflector's plastic hook.
- ② Use the included mounting parts to mount the base plastic. Pass the mains cable thru a cable entry channel.
- ③ Connect the battery's connector to the connector on P.C.B, as shown in picture.
- ④ Connect the mains cables to the terminal blocks.
- ⑤ Refit the removed parts in steps 2 and 3 (mind the correct orientation) and the luminaire is ready to operate.

MAINTAINED TO NON-MAINTAINED SELECTION CAPABILITY

- ⑥ Power on the luminaire and press continuously the TEST button for 10 seconds, until the battery charging LED blinks and the led strip turns off. The luminaire operates now as non-maintained luminaire. If you want to restore the previous condition (maintained operation), press continuously the TEST button for 10 seconds, until the battery charging LED blinks and the led strip lights with less luminosity.

NOTE: LED= Light Emitting Diode

LABELING EXPLANATION:

X: Self contained
1: Maintained
A: Including test device
***90:** 90 minutes duration

**" SLIM CLASSIC LIGHT " SERIES FOR
MAINTAINED / NON-MAINTAINED (OPTIONAL) LUMINAIRES**



TECHNICAL CHARACTERISTICS	GR-1009/L/90
OPERATION VOLTAGE	220-240V AC/50-60Hz
MAXIMUM POWER CONSUMPTION	4 VA
BATTERIES (Ni-Cd)	3.6V/350mAh
BATTERY PROTECTION	From overcharge and full discharge
INDICATIONS - CONTROLS	Battery charging LED, TEST button
CHARGING TIME	24h
MINIMUM AUTONOMOUS DURATION	90 min
ILLUMINATION SOURCE	White LED's
ILLUMINATION (mains/emergency)	25lm/45lm
DEGREES OF COVER PROTECTION	IP 40
PRODUCED IN ACCORDANCE WITH	EN 60598-1, EN 60598-2-22
OPERATION TEMPERATURE RANGE	0 to 40 °C
RELATIVE HUMIDITY	Up to 95%
CONSTRUCTION MATERIALS	Bayblend FR3010, transparent polycarbonate
EXTERNAL DIMENSIONS	262 x 100 x 51 mm
TYPICAL WEIGHT	450gr.
GUARANTEE	3 years (1 year for the battery)

GENERAL

These luminaires are used in places where emergency luminaires are needed.

Each luminaire must be permanently connected to mains power supply.

In normal operation the led strip lights and the battery is charging.

In case of a mains power supply failure the luminaire will light the led strip automatically in emergency mode. When the mains power supply is restored the device turns to normal operation.

NON-MAINTAINED OPERATION

By default the luminaire operates as maintained. The luminaire has a possibility to operate as non-maintained. To change the maintained to non-maintained operation follow the relative instructions in page 2.

INSTALLATION

To install the luminaire follow the installation instructions in page 2.

ATTENTION!!!

1. Operations for installation, maintenance or testing must be done by authorized personnel only.

2. The device must be connected to the mains power supply thru a fuse dependent by the total amount of the line's power load.

3. It is suggested to check every month the indication LED for battery charging, and by

pushing the TEST button to check the emergency circuit. The led strip should: a) light with bigger intensity as long as the TEST button is pressed (maintained operation),

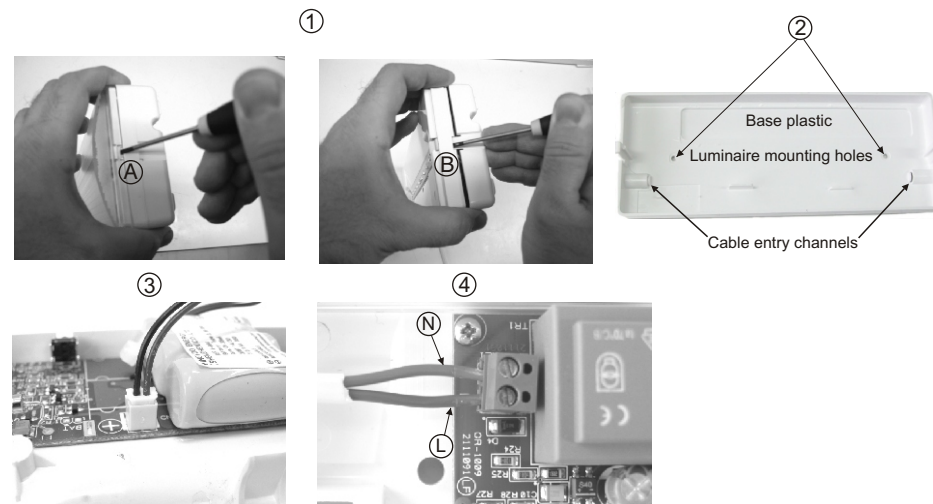
b) light as long as the TEST button is pressed (non-maintained operation). If the luminaire doesn't work as described above contact the installer.

4. It is suggested to check every 6 months the minimum autonomous duration by disconnecting the mains power supply. Count the time that the led strip lights and in case of less time than the minimum autonomous duration the battery must be replaced. If the measured time is considerably less than the minimum autonomous duration contact the installer. In case of battery or led strip replacement, these must be replaced by parts of the same type.

5. In case of inactive use for a period greater than 2 months, disconnect the battery by pulling out the battery's jumper.

6. **It is not allowed to discard batteries in to common trash bins, they must be discarded only in battery recycling points. Do not incinerate.**

INSTALLATION INSTRUCTIONS



- To install the luminaire you must dismantle it to 3 parts. Place a flat blade screwdriver in the area **A** to release the diffuser's plastic hook. Place a flat blade screwdriver in the area **B** to release the reflector's plastic hook.
- Use the included mounting parts to mount the base plastic. Pass the mains cable thru a cable entry channel.
- Connect the battery's connector to the connector on P.C.B, as shown in picture.
- Connect the mains cables to the terminal blocks.
- Refit the removed parts in steps 2 and 3 (mind the correct orientation) and the luminaire is ready to operate.

MAINTAINED TO NON-MAINTAINED SELECTION CAPABILITY

- Power on the luminaire and press continuously the TEST button for 10 seconds, until the battery charging LED blinks and the led strip turns off. The luminaire operates now as non-maintained luminaire. If you want to restore the previous condition (maintained operation), press continuously the TEST button for 10 seconds, until the battery charging LED blinks and the led strip lights with less luminosity.

NOTE: LED= Light Emitting Diode

LABELING EXPLANATION:

X: Self contained
1: Maintained
A: Including test device
***90:** 90 minutes duration